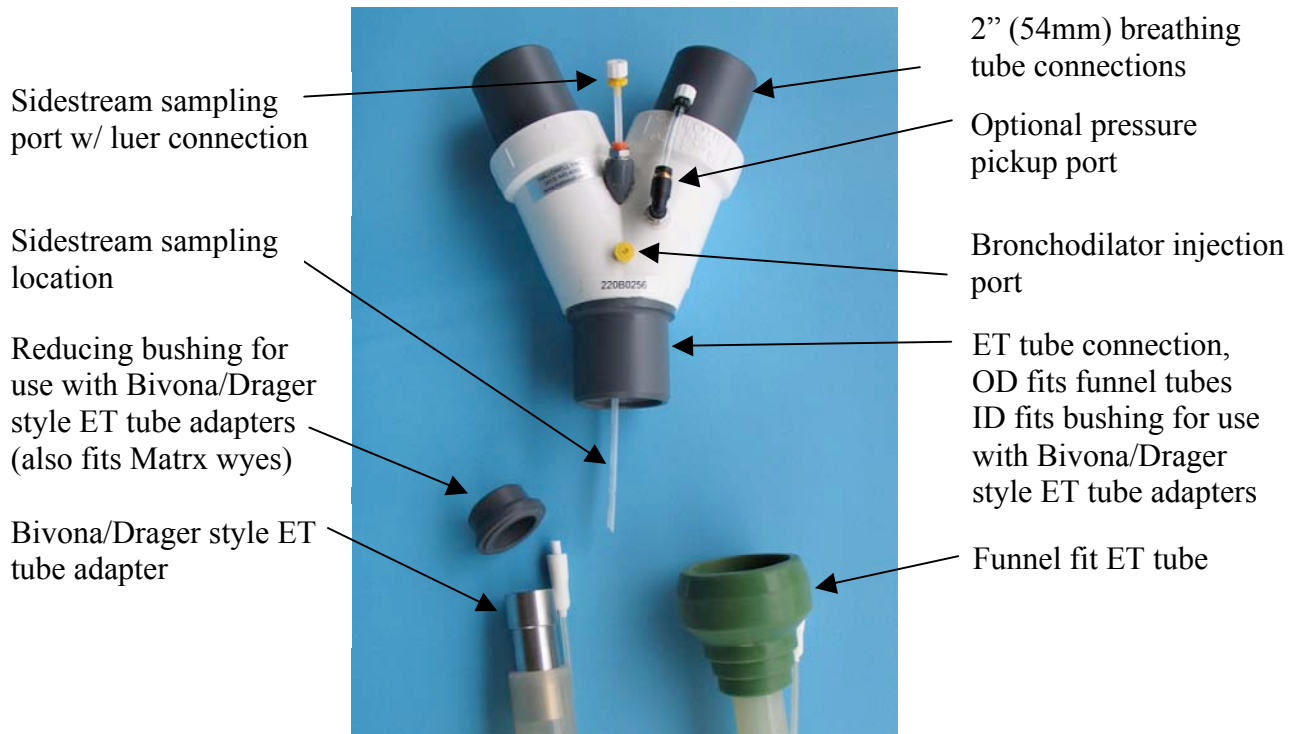
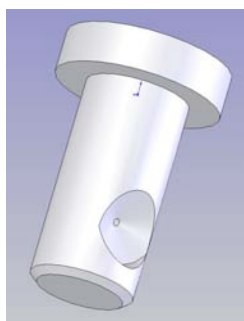


A New Patient Wye from Hallowell EMC for large animal anesthesia

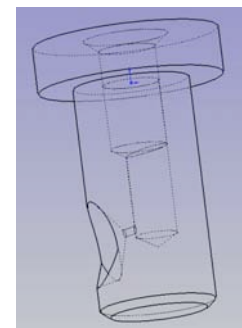
The first large animal patient wye piece (2") with an integral injection port for bronchodilator administration, a sidestream sampling port that draws from within the ET tube and an optional pressure sampling port.



This wye piece, constructed of PVC, weighs just 13.25 oz (375gm). It has a large bore for unrestricted flow when using the funnel fit style ET tubes. With the addition of an adapter the wye can also be used with the Bivona/Drager style metal ET tube adapters.



The injection port seen here is pressed permanently into the top surface of the wye piece very close to the ET tube. The spray pattern is pointed toward the ET tube and down at an angle of 25° at the center of inspiratory flow. The port is always there and ready to use at any moment.



200B0018B	Wye, 2" (50.8mm) Equine, Basic
220B0140C	Wye, 2" (50.8mm) Equine, with Gas Sampling Port
220B0255	Wye, 2" (50.8mm) Equine, with Gas Sampling Port and Bronchodilator Injection Port
220B0256	Wye, 2" (50.8mm) Equine, for Tefonius with Gas Sampling Port, Bronchodilator Injection Port and Pressure Pickup

