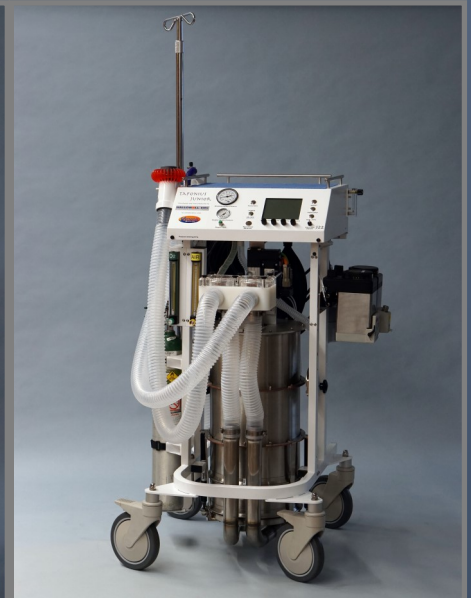




HALLOWELL EMC
Hallowell Engineering & Manufacturing Corporation

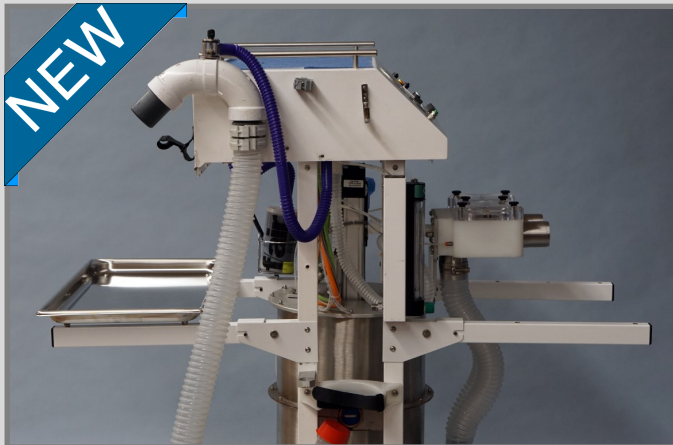
PRODUCT CATALOG

TAFONIUS



Large Animal Ventilator Product Line

Third Edition



HALLOWELL EMC

In collaboration with



Proudly Presents
TAFONIUS



Sales Contact Information

United States/Canada

Hallowell EMC
Stetson Hallowell
239 West St.
Pittsfield, MA 01201 USA
www.hallowell.com
(413) 445-4263
sales@hallowell.com

International

Vetronic Services LTD
Keith Simpson
Units 1 & 2 Henley's Business Park
Manor Road
Abbotskerswell Devon TQ12 5NF
UK
www.vetronic.co.uk
01626 365505
enquiries@vetronic.co.uk

"Undeniably the last word in mechanical lung ventilators"

The University of Edinburgh Royal (Dick) School of Veterinary Studies

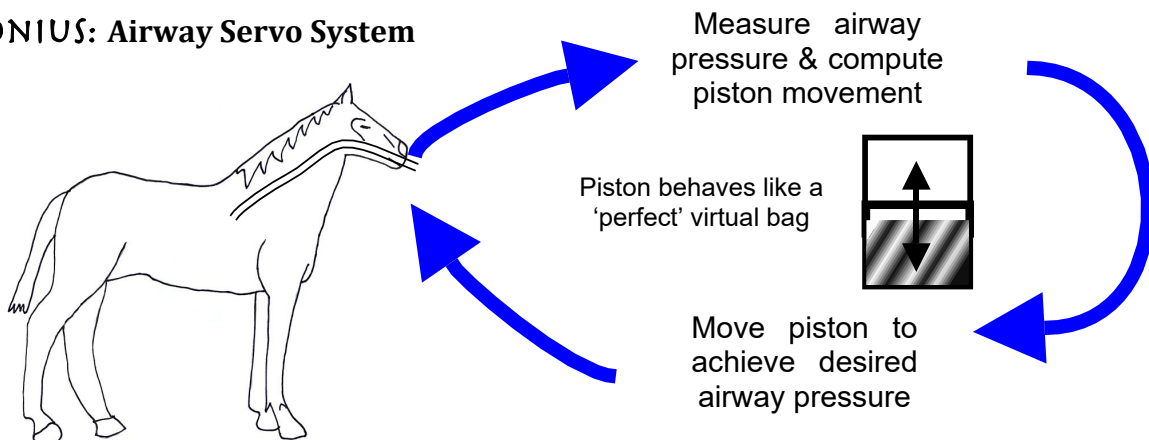
A Large Animal Anesthesia Machine and Ventilator with Integrated Patient Monitoring



TAFONIUS is a generation of large animal anesthesia machines with a piston driven ventilator, it has no bellows. It is more accurate and powerful, consumes no driving gas and is very quiet. It is electronically controlled permitting a myriad of features that can be updated online with yet unimagined modes of ventilation and options. The unit incorporates a full monitoring system including anesthetic gas concentrations, a backup system to continue operation without the computer, and rechargeable batteries that run the unit for hours. **TAFONIUS** eliminates the work-of-breathing imposed on the animal by the breathing system. **TAFONIUS** is ideal for research, data recording and user programmability. A basic version, **TAFONIUS JUNIOR**, with the same piston driven system but without the touch computer and monitor is also available for about half the price of the full system.

Ask About the NEW Machine Cover!

TAFONIUS: Airway Servo System



If the Servo Airway pressure is set to 0 cm H₂O then the patient experiences no resistance to breathing out, significantly reducing the work of breathing. To the patient it feels like exhaling to ambient with no machine attached. If the Servo Airway pressure is set to 5cm H₂O then the patient experiences 5cm of CPAP or PEEP. With the combination of multiple phases and an Airway Servo System, any pattern of breathing can be designed and implemented. In time, researchers will develop a library of ventilating modes, patterns, sequences and maneuvers that can be used to ventilate your patient. You will no longer need to buy another machine to obtain new features.



Item 000A4630—TAFONIUS with Full Patient Monitoring Capabilities

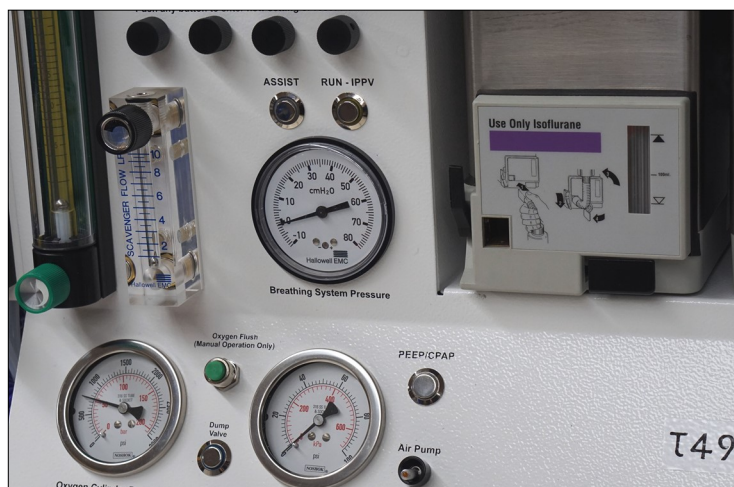
Includes 15" touchscreen computer, inspiratory pause and FiO₂, fully integrated monitoring of ECG, IBP, SpO₂, Temp, Insp/Expired CO₂, O₂, Agent, N₂O, data collection to MS Excel for research, unlimited presets for recalling all settings and alarms for different types of cases, trend display of all measured parameters, user configurable display of traces and trends, and more. Please refer to our model comparison chart for more detailed information.

Ask About the NEW Machine Cover!



Options

Item Number	Option Description
240A5126A	Air Option Kit (US)
240A5121C	Air Option Kit (Euro)
240A3620	N ₂ O Option Kit (Euro)
240A5127	N ₂ O Option Kit (US)
240A6142A	Optional Gas
000A5265A	IV Pole Attachment
000A6197	Custom Machine Dust Cover
000A6552	NEW! Premium 2" Wye Upgrade (see page 9)





TAFONIUS JUNIOR grew out of the demand for a large animal ventilator with the versatility of TAFONIUS, but without the inherent cost of the integrated monitoring. JUNIOR uses the same controlling technology for the piston control and the same mechanics for piston, valve assembly and soda-lime canister. The footprint of JUNIOR is kept small, and the height is reduced compared to TAFONIUS. JUNIOR still has full battery back-up and only requires oxygen for patient uptake, not as a driving gas. JUNIOR also uses the auxiliary back-up controller found on TAFONIUS as its primary controller.

Features Include:

- ▶ CPAP & PEEP Facility
- ▶ Flow Triggered Inspiratory Assist Mode
- ▶ Manual & Automatic Oxygen Delivery



000A5242A

Junior complete with built-in
anesthetic circuit

J
U
N
I
O
R



000A5241

Junior ventilator only. In this format,
Junior will integrate with your own
anesthetic circuit
(not included)

TAFONIUS JUNIOR

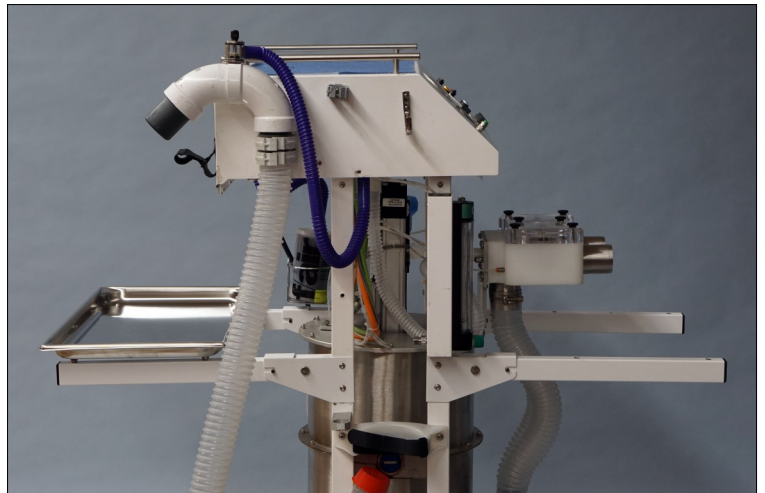
Option Packages



Item Number	Option Description
000A5266B	Single O ₂ E-Cylinder (US)
000A5268B	Single O ₂ E-Cylinder (Euro)
000A6181	Air E-Cylinder Option (US)
Upon Request	Air E-Cylinder Option (Euro)
240A5141B	Air Option (Euro)
240A5137B	Air Option (US)
240A5129A	N ₂ O Option (Euro/US)
000A5246	IV Pole Attachment
000A6175	Zoo Package
000A6176	Two Position Select-A-Tec Backbar
000A6182	Single Station Select-A-Tec Backbar
000A6552	NEW! Premium 2" Wye Upgrade (see page 9)

Zoo Package Option

The Zoo Package is available for both versions of TAFONIUS JUNIOR, the ventilator only (sans gas) and the version with gas. It enables staff to move the machine over rough terrain, around the facility and into night houses. Normally the four handles are in the collapsed position as is the front right handle (colored red) in the sketch. To move the machine the handles are latched in the upright position.



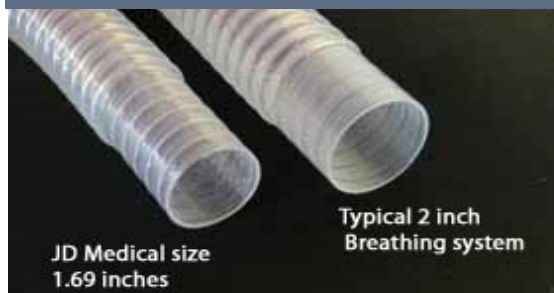
The handles can remain latched and mayo trays (two included, one is pictured above) fitted on them; one in front, one in the rear. This, in conjunction with the IV pole option, provides a clean work space and place to hang fluids. (000A6175)

TAFONIUS & JUNIOR

Parts and Accessories



**2" Clear Cuffed
Breathing System Tubing**
Perfect for Tafonius Applications!
Available in Four Lengths



Breathing System Hoses
1.69" and 2" dia.

For all available lengths visit
www.hallowell.com



**000A4640 Foal Breathing System
(22 mm)**



000A4636B
22mm Breathing
Tube Adapter



000A4638
Water Trap
DRYLINE I
000A3448
Water Trap
DRYLINE II

Also Available
DRYLINE Water Trap
Gas Sampling Lines
000A4639/000A3449



200A4439A
Coupling for 2"
Breathing System

200A4439
Coupling for 2"
Breathing
System
MRI Compatible

For current stock and pricing visit Hallowell.com



Vaporizers

000A4072	TEC5	ISO	Well Fill	Select-A-Tec Mount
000A4082	TEC5	ISO	Key Fill	Select-A-Tec Mount
000A4075	TEC5	ISO	Well Fill	Cage Mount*
000A6196	TEC5	ISO	Key Fill	Cage Mount *

Hallowell EMC recommends TEC5 models for their larger sump size (less frequent fills) and the Select-A-Tec mounting system that prevents delivery from both vaporizers at the same time. TEC3 and Sevoflurane models may be available upon request.

*Please note that Cage Mount vaporizers can only be used with **JUNIOR** models.

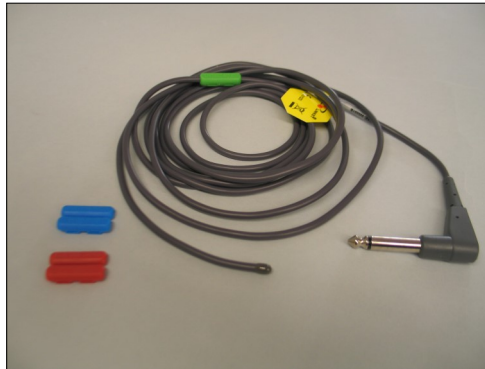
Pricing and additional parts and accessories available online at www.hallowell.com

TAFONIUS & JUNIOR

Parts and Accessories



ECG Patient 3-Lead Set
112A5181A (Euro)
112A5182A (US)



Temperature Probes

131A4461—Esophageal/Rectal Autoclavable - YSI 401AC w/90° Plug, 10' 4" long

131A4462—YSI 401/401AC Compatible, 4mm straight connector, 9'6" long

131A4463—YSI 402/402AC Compatible, 3mm, straight connector, 9'6" long

131A4464—YSI 402/402 similar, straight connector, 9'6" long



IV Pole

Includes Mounting Attachment

000A5265A—Tafonius IV Pole
000A5246—Junior IV Pole



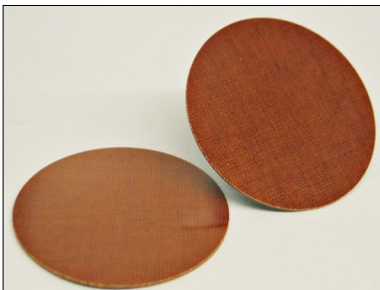
SpO₂ Sensors

134A4500—Genuine Nonin 2000SL Lingual Clip

134A4501—Genuine Nonin 2000T Reflective (Shown)



Drain Plug
 Tafonius & Junior
210A3845A



190B0174A—Valve Disc for Tafonius

Not pictured:
200B2437A—Valve Block Top Cover for Tafonius & Junior

*Previous styles also available for older machines



NEW! Absorber Pan with Handles

For ease of use and quick changes

000A4621A—Absorber Pan w/ Handles



Keyboard Accessories

000A4635—Mini Flexible Waterproof Keyboard

000A5263—Pullout Keyboard Shelf

TAFONIUS & JUNIOR

Parts & Accessories—Update



NEW! 220B0331

Wye, 2" Equine w/ Gas Sampling Port, Pressure Pickup and Bronchodilator Injection Port

Replaces our standard wye with a more durable construction!

Also Available—220B0332

Wye, 2" Equine w/ Gas Sampling Port and Bronchodilator Port



NEW! 000A6534

Premium Wye, 2" w/ Pressure Pickup, Gas Sampling and Bronchodilator Injection Ports

In Collaboration with Vetronic Services LTD, Hallowell EMC is pleased to introduce the Premium 2" Wye. Made of Durable, lightweight Acetal C material.

Visit <https://tinyurl.com/yyl7rr3r> To view a durability test!

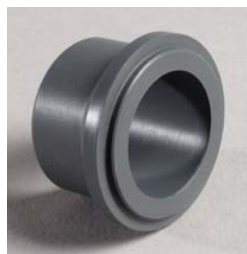
Also available as an upgrade option on new Tafonius & Tafonius Junior Orders. Replaces standard Wye with Premium. Use item number 000A6552.

NEW! 000A6535

Wye bushing adapts 2" Premium Wyes (above) for use with Bivona/Drager SS ET Tube Adapters. This adapter is threaded for the Premium Wye and is not compatible with our other model wyes.



Bivona/Drager Adapters



200A2594C

Wye Bushing Adapter for NEW style Hallowell 2" Wye (Above)

200A2594B

Wye bushing adapts 2" Old -Style Hallowell or Matrx Equine Wyes for use with Bivona/Drager SS ET Tube Adapters. (Fits white/grey body Wye styles only)



Hallowell Equine Wyes can be used with both Funnel Fit and Bivona/Drager style metal endotracheal tube adapters.

Discontinued Wyes:

200B018B
220B0140C
220B0255
220B0256

Please note all discontinued items are now out of stock



000B0300

Set of nine stainless steel endotracheal tubes for large patients.

Pricing and additional parts and accessories available online at www.hallowell.com

Also Available Individually:

220B0301 – 14mm
220B0302 – 16mm
220B0303 – 18mm
220B0304 – 20mm

220B0305 – 22mm
220B0306 – 24mm
220B0307 – 26mm
220B0308 – 30mm
220B0309 – 35mm

Features Comparison of Junior and Tafonius Large Animal Machines

Junior sans gas	Junior w/gas	Tafonius (stripped)	Tafonius (full boat)	
000A5241	000A5242	000A5636	000A4630	
Ventilator only	Gas machine and ventilator	Gas machine, ventilator and more	Gas machine, ventilator, monitoring and advanced features	Features as of 01/Jan/2016
✓	✓	✓	✓	• Stainless and Aluminum construction with white powder coated finish
15 seconds	30 seconds	2 seconds	2 seconds	• Quick access to internal cleaning of the "bellows"
✓	✓	✓	✓	• 8" wheels, front wheel locks
✓	✓	✓	✓	• Accommodates a wide range of patients 100 lbs – 2000 lbs (more or less!)
✓	✓	✓	✓	• Future, new modes of ventilation as features are software upgradeable
✓	✓	✓	✓	• Always powered by two 12v rechargeable batteries, AC keeps them topped off
✓	✓	✓	✓	• Servo driven piston, NO bellows
✓	✓	✓	✓	• Control Settings for Tidal Volume, Respiratory Rate, Insp-time, MWPL, CPAP/PEEP, Displays the Resulting MV, I-flow, E-time and I:E ratio
✓	✓	✓	✓	• Displays above parameters when patient is spontaneously breathing; Respiratory monitoring
✓	✓	✓	✓	• Tidal volumes up to 20 liters in 100ml increments with 25 ml resolution
Future	Future	Future	✓	• Delivers compliance compensated TVs insures the patient actually receives the set TV
✓	✓	✓	✓	• Respiratory Rate 1 – 30 breaths per minute
✓	✓	✓	✓	• Maximum Working Pressure Limit adjustable from 10 – 80 cmH2O
✓	✓	✓	✓	• Implementation of PEEP and CPAP up to 50cmH2O
✓	✓	✓	✓	• Implementation of Assist Mode Ventilation
✓	✓	✓	✓	• Inspiratory flow rates up to 900 lpm
✓	✓	✓	✓	• Facilitates the implementation of Closed Circuit Anesthesia with add-a-liter feature
✓	✓	✓	✓	• Scavenging flowmeter
✓	✓	✓	✓	• Backup scavenging system
✓	✓	✓	✓	• Uses NO driving gas to compress the "bellows"; a major ongoing cost savings
✓	✓	✓	✓	• Oxygen is used only for patient uptake
Optional	✓	✓	✓	• Airway pressure gauge
Additional	Additional	Additional	Additional	• IV pole
	✓	✓	✓	• 22mm Foal Breathing Circuit included
	✓	✓	✓	• Lightweight, kink free clear breathing tubes
	✓	✓	✓	• Accommodates both funnel fit and Bivona/Drager style ET tube adapters
	✓	✓	✓	• Absorber pan holds 6.5 liters, 11.7 lbs, 5.3 kg of absorbent
	✓	✓	✓	• Oxygen flowmeter for manual use
	✓	✓	✓	• Oxygen flush button for manual use
	Additional	✓	✓	• Hospital line pressure gauge
	✓	✓	✓	• Low oxygen supply pressure alarm
	Additional	Additional	Additional	• Optional N2O and/or Air flowmeters
	✓	✓	✓	• Bronchodilator injection port
	n*	✓	✓	• Pullout swiveling keyboard tray
	n	✓	✓	• Dual mount Select-a-Tec™ vaporizer back bar
	n	✓	✓	• Swivel valve block permits the breathing tubes to exit to the right or the left
	n	✓	✓	• Stainless hoop handle and bumpers
	n	✓	✓	• GFI protected with 3 auxiliary AC power outlets
	n	✓	✓	• Panel mount e-cylinder pressure gauge
	n	✓	✓	• "Crash cart" drug drawer below work surface
	n	✓	✓	• Absorbent can be changed in seconds
	n	✓	✓	• Two work lights and a built in maintenance tool kit
	n	✓	✓	• Accommodates two oxygen e-cylinders for backup, temporary disconnect or field use
Additional	Additional	Included	Included	• Optional oxygen e-cylinder mount for backup, temporary disconnect or field use
		✓	✓	• Footprint 30"wide x 36"deep, height is 72"
			✓	• Redundant computer systems
			Main Control	• 15" 1028x768 touchscreen computer w/GUI interface and 160 Gigabyte HD
Main Control	Main Control	Main Control	Backup Control	• Microprocessor with TV, RR, Itime, MWPL, CPAP/PEEP and Assist mode controls
			✓	• Settable Ip, inspiratory pause, 0-40% of the Itime
			✓	• Settable FiO2, 30% – 100 % (requires Air Option above)
			✓	• Choice of automatic or manual modes for FiO2 and anesthetic delivery
			✓	• Fully integrated monitoring of ECG, IBP, SpO2, Temp, Insp/Expired CO2, O2, Agent, N2O
			✓	• Sidestream Gas Analyzer standard
			✓	• Paramagnetic oxygen sensor w/ above, no galvanic cells to worry about or replace!
			✓	• High and low alarms for all parameters
			✓	• Anesthesia record printout for clinical use
			✓	• Data collection to Excel™ for research
			Future	• User programmability for the researcher
			✓	• Unlimited presets for recalling all settings and alarms for different doctors or types of cases
			✓	• Trend display of all measured parameters
			✓	• User configurable display of traces and trends
			✓	• Freeze traces function
			✓	• Alarm silence/locked/disabled function
✓	✓	✓		• Alarm silence function only
✓	✓			• Footprint 24"wide x 28"deep, height is 50"
Optional				• VML by MidMark (Matrx) gas machine head and mounting pole
Additional				• VML by MidMark (Matrx) mounting pole only
Optional	Optional	Optional	Depends on location	• Up to 2 Days in-service and training at installation

* Note: It is possible to upgrade Junior with gas to have many of the feature of Tafonius. The features that would not be available are indicated by the symbol "n" in the table above. Pricing for features indicated as "Optional" has not been determined.



HALLOWELL EMC

Hallowell EMC
(413) 445-4263
239 West Street
Pittsfield, MA 01201
info@hallowell.com